

Citrines

Using the word bank below, can you write in the correct name of each tooth to match its function and draw a picture of it?

Premolar

Canine

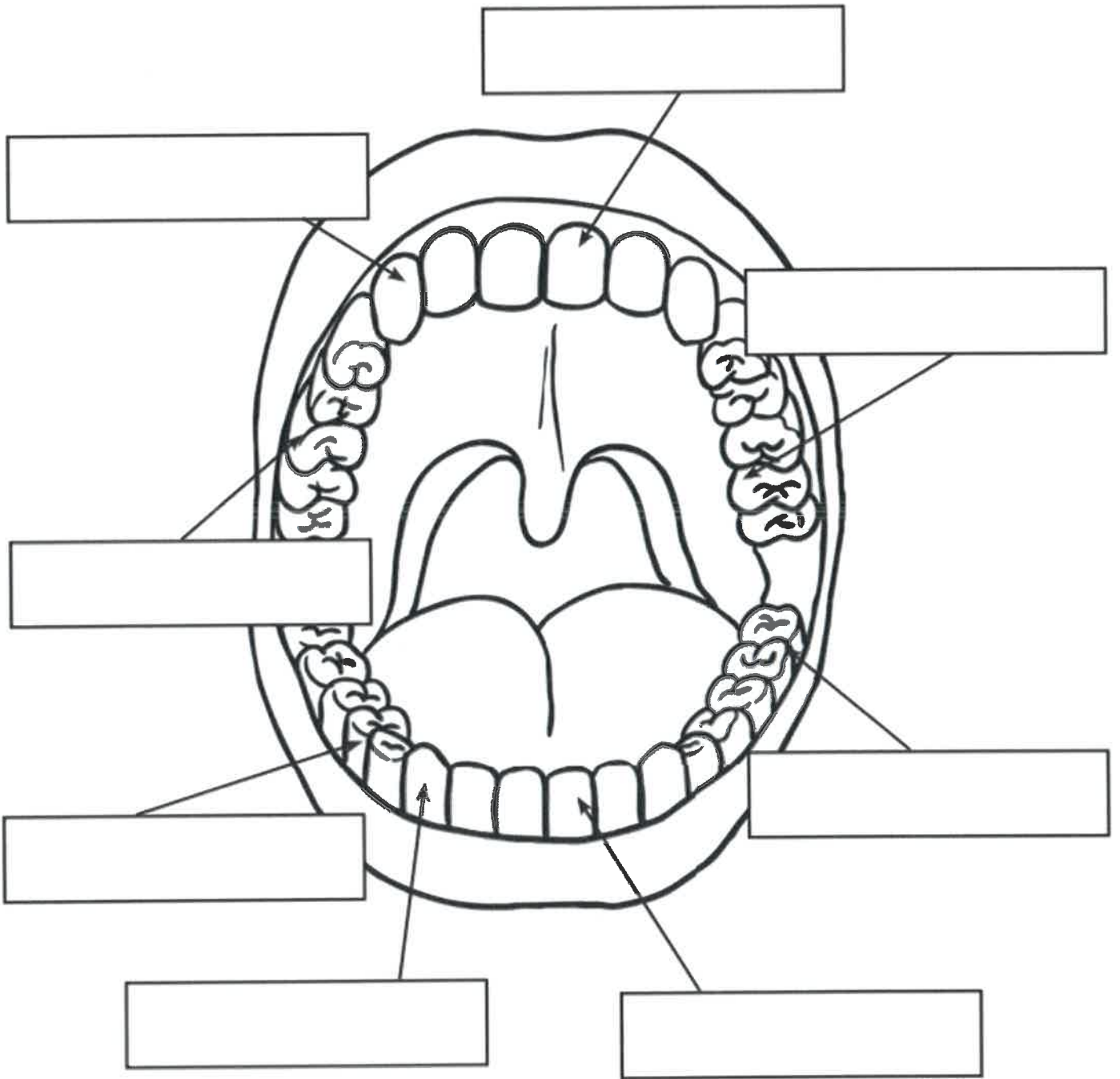
Incisor

Molar

Name	Picture	Function
		These wide teeth with two points called 'cusps' crush and grind food.
		These teeth are sharp and pointy. Their job is to tear food.
		These chisel-shaped teeth with a sharp, straight edge cut and chop food.
		These wide teeth with several cusps are used to grind food.

Moonstones

Can you fill in the correct tooth names on the diagram?



Words to Use

Premolar

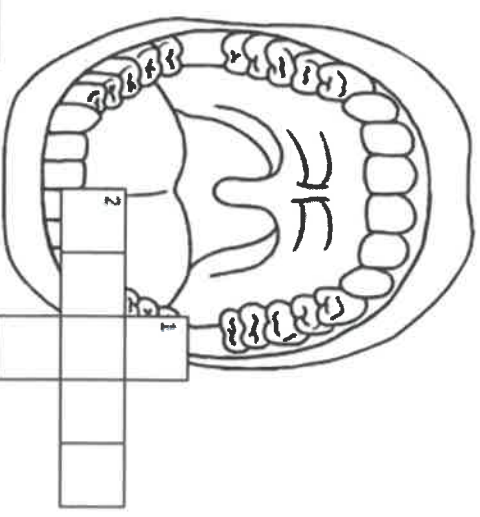
Molar

Canine

Incisor

All About Teeth

Use the clues to fill in and solve the puzzle below.

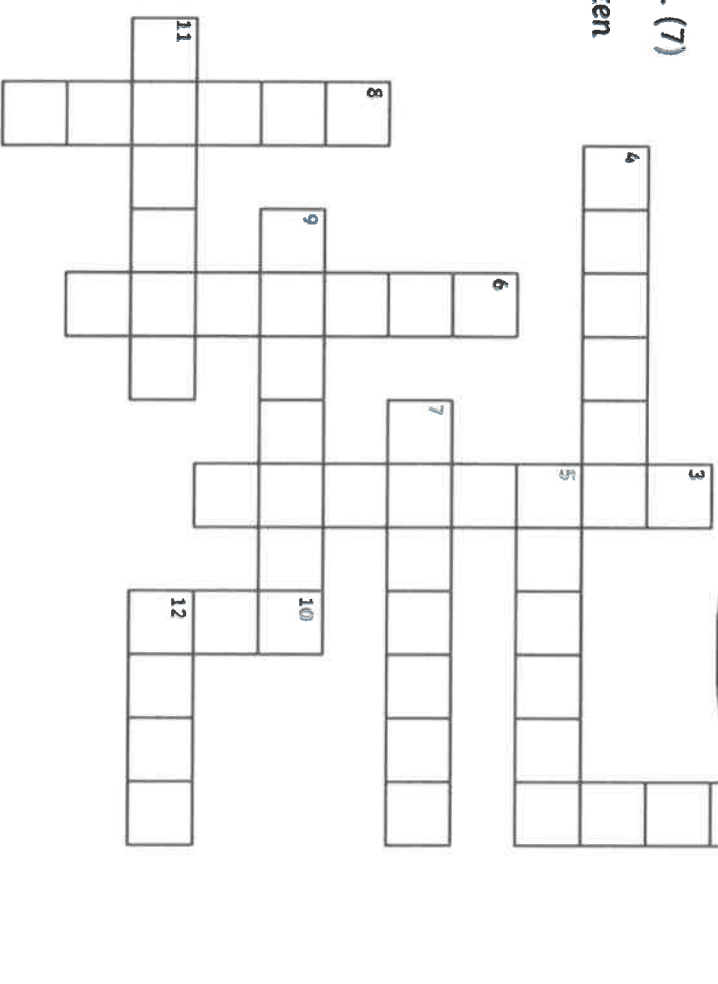


Across

2. Teeth used for grinding and chewing. (5)
4. A liquid found in the mouth. (6)
5. A type of tooth used for ripping and tearing. (6)
7. This person checks your teeth. (7)
9. The dentist might put one of these in a tooth, which has a hole. (7)
11. A type of molar tooth right at the back of the mouth and are often the last teeth to appear. (6)
12. Your first set of teeth - you have 20. (4)

Down

1. A layer of bacteria on your teeth - it can lead to decay. (6)
3. Very small, form plaque and live in your mouth. (8)
6. Type of tooth used for biting and cutting. (6)
8. A hole in a tooth. (6)
10. This is pink and surrounds the bottom part of the tooth. (3)



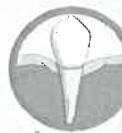
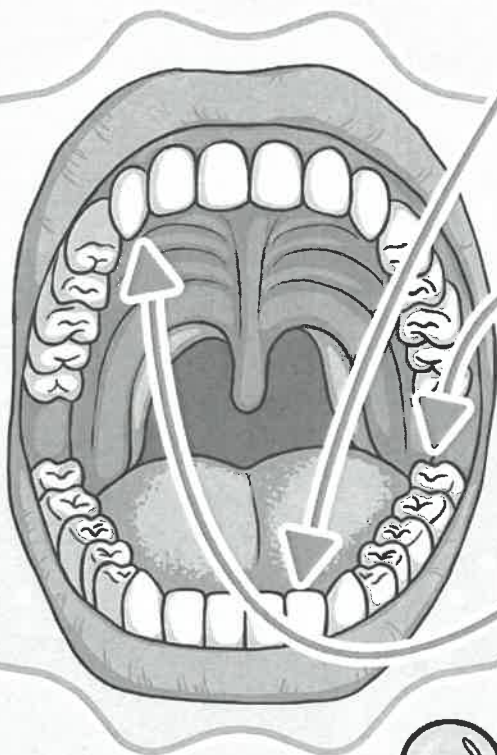
All About Teeth



When babies are born, their gums contain 20 baby teeth waiting to grow and emerge. Children usually have all of their baby teeth by the time they are three. Around the age of six, baby teeth begin to fall out ready for adult teeth to replace them. A human adult usually has 32 teeth.

Types of Teeth

There are various different types of teeth and they all have different roles.



Incisors

These are the teeth with a long, thin edge at the front of our mouths. They are used for biting and cutting food.



Molars

These are the large teeth with a flat, wide surface at the back of our mouths. They are used for crushing and grinding up food.



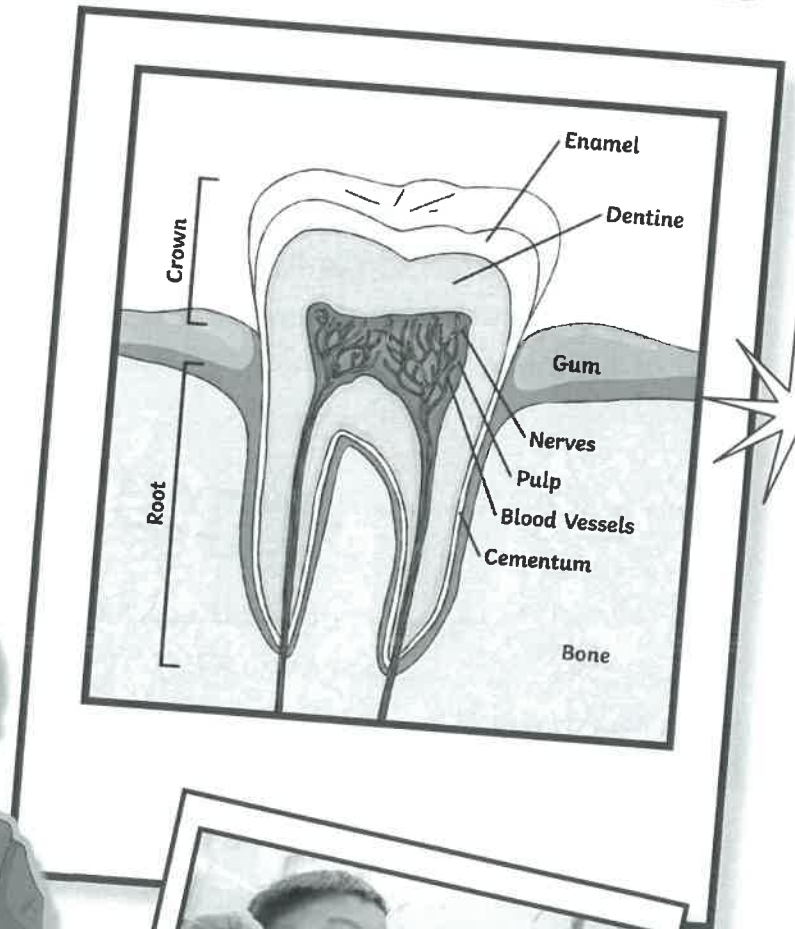
Canines

These are the pointy, sharp teeth found at the front of our mouths. They are used for tearing up food.

Inside a Tooth

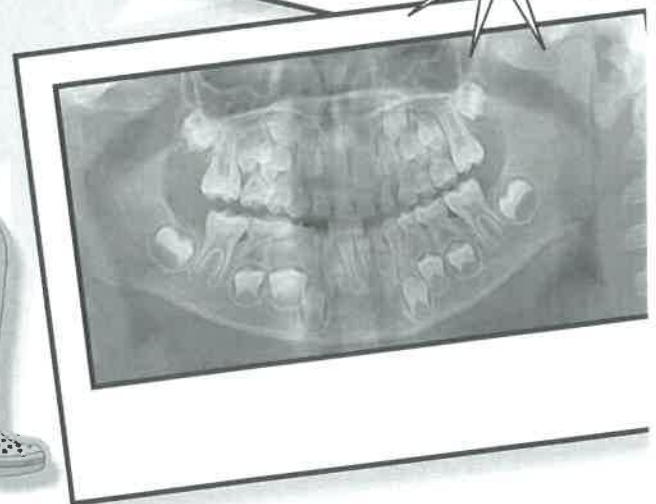
All About Teeth

A tooth is made up of different layers. The top layer is called enamel. This pearly white coating of the tooth is the hardest substance in the human body. The main purpose of enamel is to protect the more delicate parts of the tooth. Underneath the enamel, is a softer material called dentine. This layer acts as a second line of protection for the pulp, which is found beneath it. The sensitive tooth pulp houses the many nerves and blood vessels that serve each tooth by bringing nutrients and oxygen.



How to Look After Your Teeth

Looking after your teeth is an important part of keeping your body healthy. Brushing your teeth twice a day for two minutes removes bacteria and prevents plaque building up. It is also important to visit the dentist regularly. A dentist can examine your teeth and make sure that they are healthy.



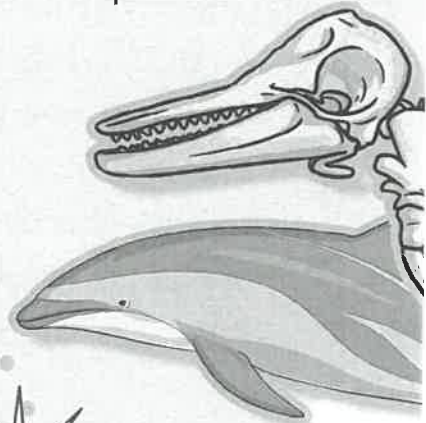
Sapphires

All About Teeth

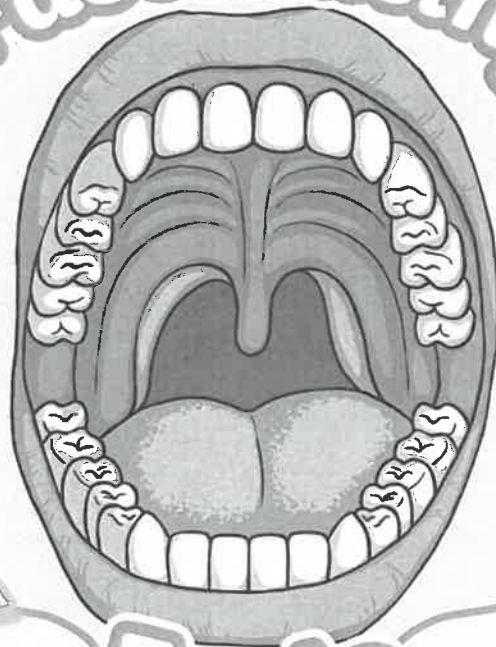
The first recorded reference of a person working like a dentist was around 5000 years ago. His name was Hesy-Re and he lived in Egypt.



Dolphins can have over 200 equally sized, cone-shaped teeth.

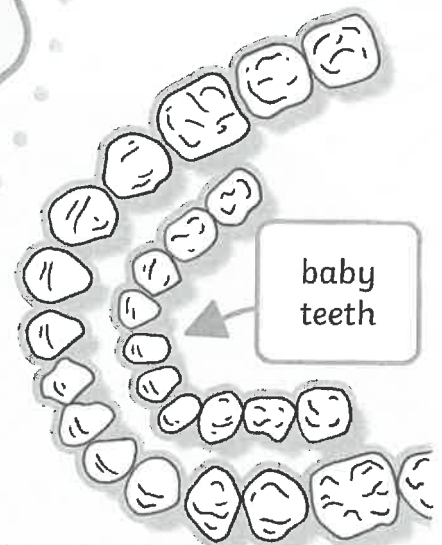


Fascinating



Facts

Before the invention of modern toothpaste, people used chalk, oyster shells and even charcoal to clean their teeth.



adult teeth

baby teeth

Questions

1. How many teeth do most adults have? Tick one.

- 20
- 16
- 32
- 200

2. Number the layers of the tooth from **1-4** to show their order from the outside to the inside. Remember to use the diagram to help you!

- Dentine - softer layer of protection.
- Enamel - the hardest substance in the body.
- Nerves and blood vessels - found inside the pulp.
- Pulp - the soft inside part of a tooth.

3. Draw **three** lines and match the type of tooth to the correct description.

molars

canines

incisors

the pointy, sharp teeth found at the front of our mouths

the teeth with a long, thin edge at the front of our mouths

the large teeth with a flat, wide surface at the back of our mouths

4. Look at this sentence. Underline a word which suggests that some adults might not have 32 teeth.

A human adult usually has 32 teeth.

5. Look at the section called **Inside a Tooth**.

Find and copy one word which means 'material'.

6. What shape are dolphins' teeth?

7. Why do you think it is important to look after your teeth?

Amethysts

All About

Teeth



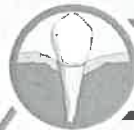
Teeth Are Terrific!

When babies are born, their gums contain 20 growing baby teeth waiting to emerge. From the age of six months, babies' first teeth can begin to erupt from their gums. They are sometimes called milk teeth. Children usually have all of their baby teeth by the time they are three. Around the age of six, children's baby teeth begin to fall out ready for their adult teeth to replace them. A human adult usually has 32 teeth.

Types of Teeth

There are various different types of teeth and they all have different roles.

The three main types of teeth are:



Incisors

These are the teeth with a long, thin edge at the front of our mouths. They are used for biting and cutting food.



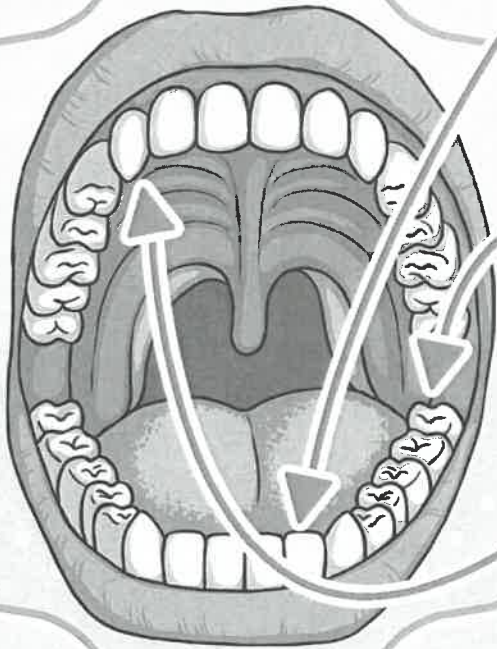
Molars

These are the large teeth with a flat, wide surface at the back of our mouths. They are used for crushing and grinding up food.



Canines

These are the pointy, sharp teeth found at the front of our mouths. They are used for tearing up food.

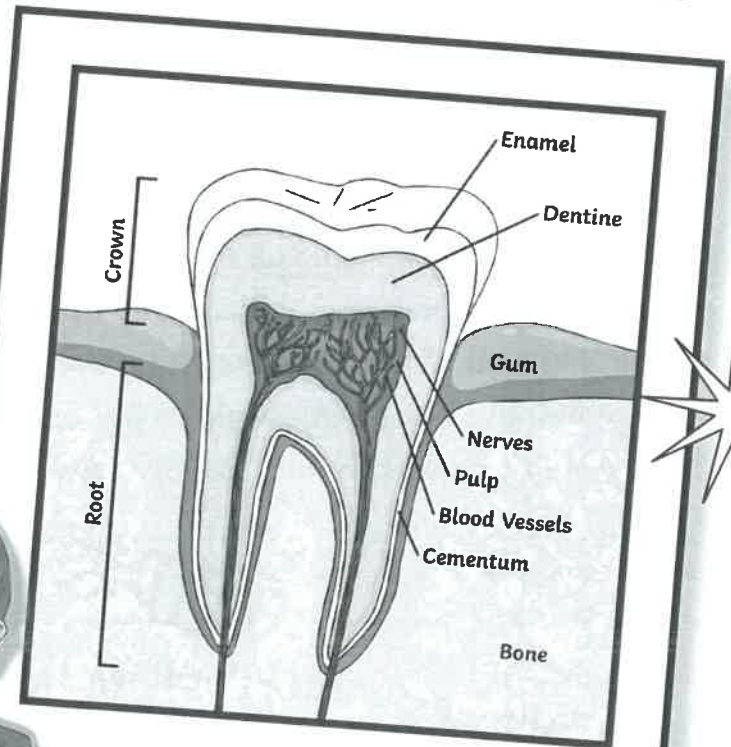


Inside a Tooth

A tooth is made up of a number of different layers. The top layer is called enamel. This pearly white coating of the tooth is the hardest substance in the human body. Its main job is to protect the more delicate parts of the tooth. Underneath the enamel, is a softer material called dentine. This acts as a second layer of protection for the pulp, which is found beneath it. The sensitive tooth pulp houses the many nerves and blood vessels that serve each tooth by supplying nutrients and oxygen.

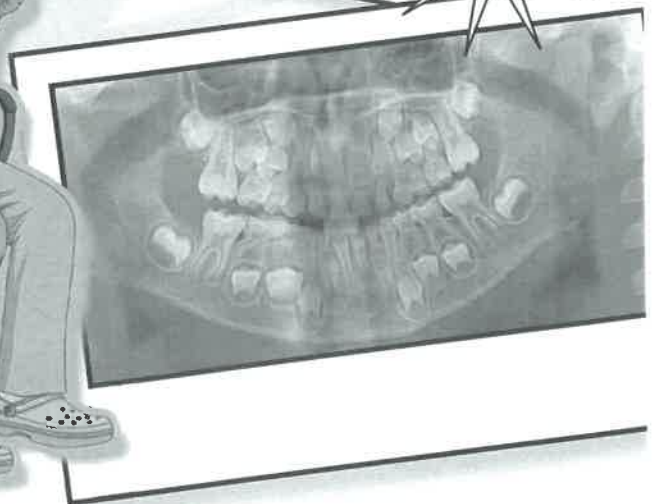


All About Teeth



How to Look After Your Teeth

Looking after your teeth is a crucial part of keeping your body healthy. An important task in looking after your teeth is to brush them. Brushing your teeth twice a day for at least two minutes removes bacteria and prevents plaque building up. It is also important to visit the dentist regularly. A dentist can assess your teeth and ensure that your teeth are healthy and monitor any new teeth that may be erupting.

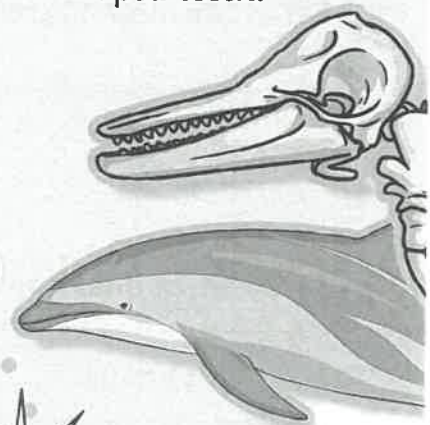


All About Teeth

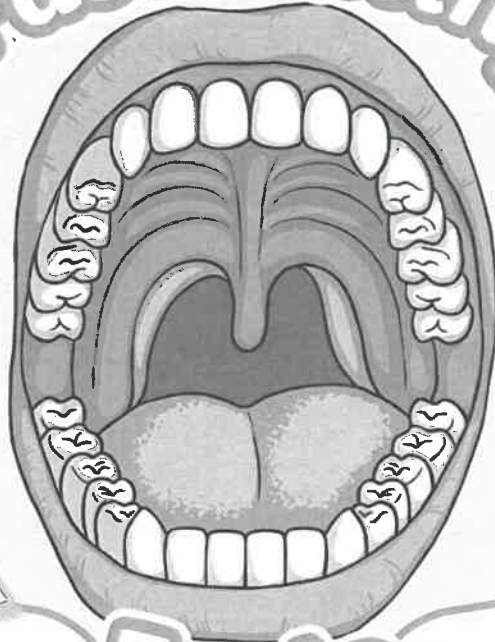
The first recorded reference of a person specialising in the health of teeth was around 5000 years ago. His name was Hesy-Re and he lived in Egypt.



Dolphins can have over 200 equally sized, cone-shaped teeth.



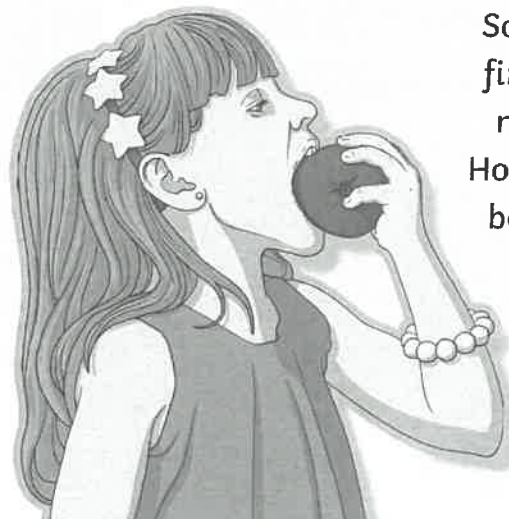
Fascinating



Facts



Before the invention of modern toothpaste, people used chalk, oyster shells and even charcoal to clean their teeth.



Some babies don't get their first teeth until they are 12 months old or even older. However, some babies can be born with teeth! These are called natal teeth.

Questions

Amethysts

1. Where did the first recorded dentist live? Tick one.

- America
- France
- Egypt
- UK

2. Fill in the missing words.

When babies are born, their gums _____ 20 growing baby teeth waiting to _____.

3. Draw **three** lines and match each part of the tooth with the correct description.

enamel

dentine

pulp

the softer layer of protection

the soft sensitive part of the tooth that contains nerves

the hardest substance in the body

4. Look at this sentence. Underline one word which tells you that you need to visit the dentist more than once.

It is also important to visit the dentist regularly.

5. Look at the section called **Types of Teeth**.

Find and copy one word which means the same as 'crushing'.

6. What colour is enamel?

7. Why do you think we have different types of teeth in our mouths?

8. Summarise the things you can do to keep your teeth healthy.
